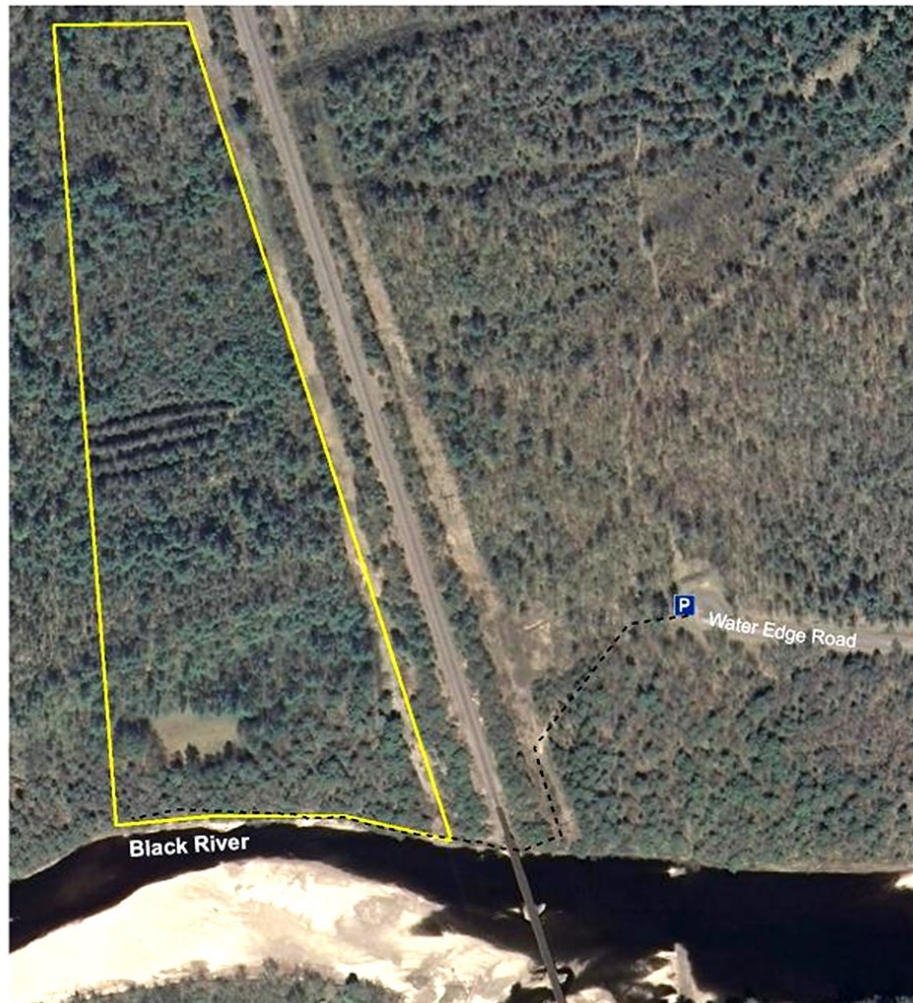


Water's Edge Woods Property Map



Legend

- Water's Edge Woods Bdry
- Trails
- Parking & Access

180 90 0 180 Feet



Jackson Co
Adams Twp
T21N R4W
Sec 1

mississippi valley conservancy - 608-784-3606 - www.MississippiValleyConservancy.org



Water's Edge Woods

Directions

From Black River Falls, WI head north out of town on Highway 12/27. Turn right/east onto County Road E then take the second right to turn south onto Water's Edge Road. Drive to the end and park at the cul-de-sac. A trail leads from the cul-de-sac to the railroad bridge to access the property.

Property Description

Water's Edge Woods is MVC's first nature preserve in Jackson County, the result of a donation from Gil and Jon Homstad and a partnership with the Friends of the Black River.

This 20-acre preserve, located just east of Black River Falls, protects over 700-feet of frontage along the Black River. The land includes a combination of wetlands and forest dominated by jack and white pine and red and black oak. Snow Creek, a Class I Trout stream, borders the western boundary of the Property. Protection of the Black River and associated wetlands, creeks, and springs is vital for the protection of Wisconsin's ground and surface water quality.



Conserve. Enjoy. Explore.

Stewardship

"Land donations like this one will benefit the community, wildlife, watershed, and overall environment," said Andy Ellingson, president of local group Friends of the Black River.

"The Homstads' generosity demonstrates the important role of private landowners in preserving Wisconsin's outdoors for future generations" said Abbie Church, Mississippi Valley Conservancy conservation specialist.



What Can I do at Water's Edge Woods?

- ◆ Open to the public for hunting, fishing, canoeing, hiking, wildlife observation and snowshoeing. (See trail map)
- ◆ Hikers are encouraged to take precautions during hunting seasons.
- ◆ Provide environmental education to area school groups.
- ◆ You can help keep our preserve beautiful by carrying out your trash.

Mississippi Valley Conservancy

Mississippi Valley Conservancy was formed by a group of local citizens that responded to growing development in the blufflands of southwestern Wisconsin by organizing a land trust to ensure conservation of the remaining special places in this region.

MVC works with willing landowners to protect our region's beautiful and natural areas for the enjoyment of current and future generations. We focus on areas of scenic, biological, agricultural and cultural importance throughout nine counties of southwestern Wisconsin (Buffalo, Trempealeau, Jackson, Monroe, La Crosse, Vernon, Crawford, Richland and Grant). Our various tools for land conservation include:

- ◆ Conservation Agreements
- ◆ Land Donations & Purchases
- ◆ Land Acquisition

You can help! Please become a contributing member by sending a tax-deductible donation to:

Mississippi Valley Conservancy
1309 Norplex Dr., Suite 9
P.O. Box 2611
La Crosse, WI 54602
(608) 784-3606

info@MississippiValleyConservancy.org

